

Connecting Your Mac OS X Laptop to the Law School's Secure Wireless Network

1. Locate the wireless icon in the menu bar and click (Figure A).



Figure A
(Wireless icon in Menu Bar)

2. Verify that your **AirPort** is turned on.
3. Select “**dedmanlaw**” from the list of available networks (Figure B).

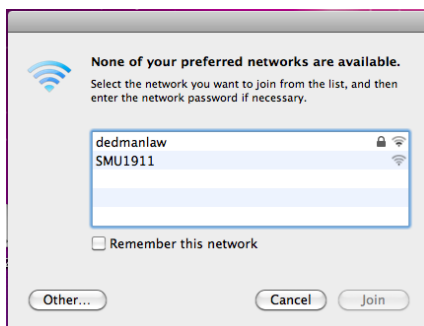


Figure B
List of available networks

4. Check the box beside “**Remember this network**” and input your SMU student ID for the Username and your SMU password and click “**Join**” (Figure C).

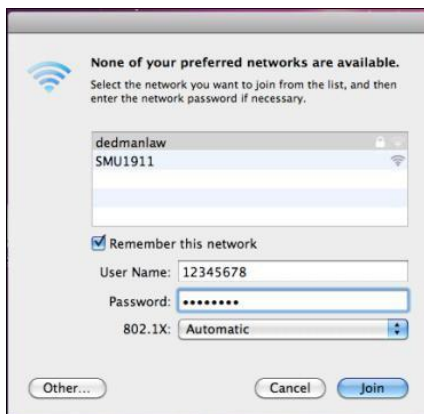


Figure C
Connect to “dedmanlaw”

Once you have connected you will notice your wireless icon in the menu bar has changed as seen in Figure D, and “**dedmanlaw**” will have a check next to it as seen in Figure E



Figure D
Wireless icon in Menu Bar shows connected

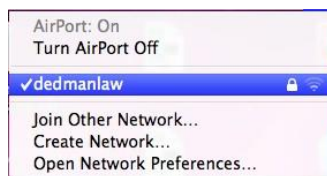


Figure E
Connected next to dedmanlaw”

5. To verify settings click on **“Open Network Preferences”** from the Wireless icon (Figure F)



Figure F
To verify network settings select **“Open Network Preferences”**

6. Select **“AirPort”** from the left column. On the right, next to **“Status”** you will notice **“Connected”** with a valid IP Address. Select **“Advanced”** from the bottom right (Figure G)

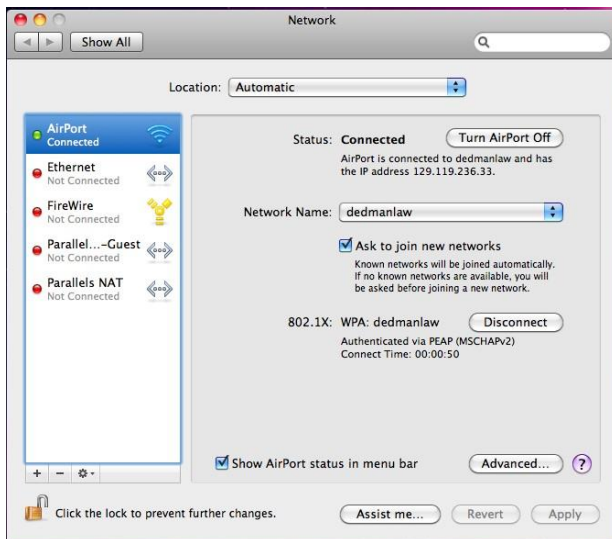


Figure G
Airport status

7. From the **“Advanced”** menu select the **“802.1x”** tab from the top. In the left column select **“dedmanlaw”**. In the right column verify your Username and Password are entered and confirm that **“Authentication”** only shows **“PEAP”** to be enabled and **“Wireless Network”** should show **“dedmanlaw”** (Figure H)

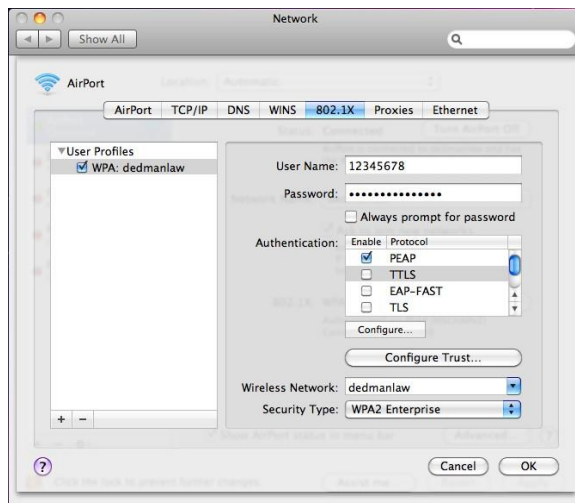


Figure H
Confirm 802.1x settings

8. Click OK