

CONFIGURING YOUR WIRELESS CONNECTION (WINDOWS XP)

If your computer's wireless network adapter has already been set up and is enabled, you may see an icon like that in **Figure 1** below:

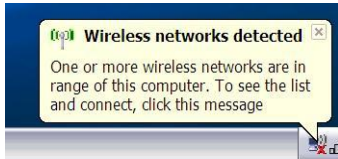


Figure 1

If you do not see this icon, please make sure your wireless adapter is plugged in and activated and the connection is not disabled.

1. Click **Start**
2. Click **Settings** (or select **Connect To**)
3. Click **Network Connections** (or select **Show all Connections**)
4. Right click the **Wireless Connection**
5. Select **Properties**
6. Select the **Wireless Network** Tab
7. Click **Add** (if dedmanlaw isn't in your network list.) Go to Step 9.
8. If dedmanlaw is in your network list, click on it and click **Properties**.
9. Enter **dedmanlaw** as the Network Name (SSID) (This is case sensitive) See (**Figure 2**)
10. Select **WPA** for Network authentication
11. Select **TKIP** for Data Encryption
12. Select the **Authentication** tab (**Figure 3**)
13. Check the box next to “**Enable IEEE 802.1x authentication for this network**” (unless “grayed out.”)
14. Select **Protected EAP (PEAP)** for the EAP Type
15. Uncheck **Authenticate as computer when computer information is available**
16. Uncheck **Authenticate as guest when user or computer information is unavailable**
17. Click **Properties**
18. In the list of Certificates, select ‘**Thawte Premium Server**’
19. Uncheck “**Enable Fast Reconnect**” (**Figure 4**)
20. Click **Configure**
21. Uncheck the box to “**Automatically use my Windows logon name and password (and domain if any)**”
22. Click **OK** (3 times)
23. Click **Close**

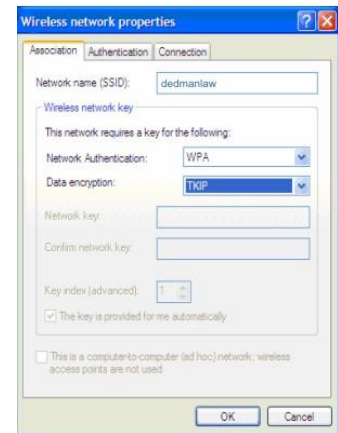


Figure 2

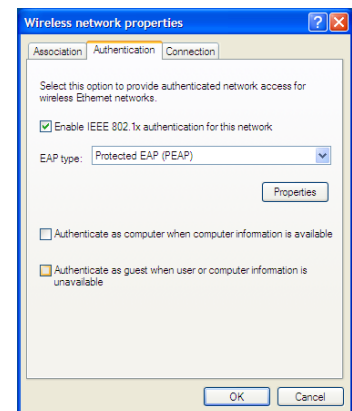


Figure 3

24. In the Wireless Network Connection Properties window, you should now see the wireless profile. (Figure 5)
25. Click the **Advanced** button
26. Select **Access Points Infrastructure Network Only** (Figure 6)
27. Uncheck **Automatically Connect to Non Preferred Networks** (Figure 6)
28. Click **Close** and then **OK** on the **Connection Properties** (Figure 5)
29. Click on the bubble that appears over your wireless connection.
30. When prompted, enter your SMU ID and password (Figure 7).
31. Click OK on the ensuing window. Please wait until it is connected.

If you have any questions, please contact lawtech@smu.edu.

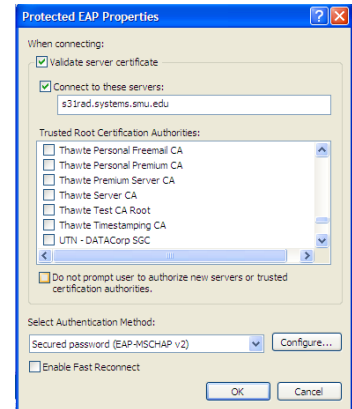


Figure 4

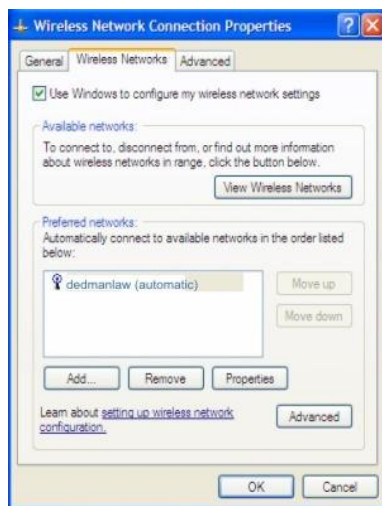


Figure 5



Figure 6



Figure 7