

CONFIGURING YOUR WIRELESS CONNECTION (FOR WINDOWS 7)

1. Locate the wireless signal icon in the task bar (Figure 1)



Figure 1

2. Select the "dedmanlaw" wireless network and click the "Connect" button (Figure 2)

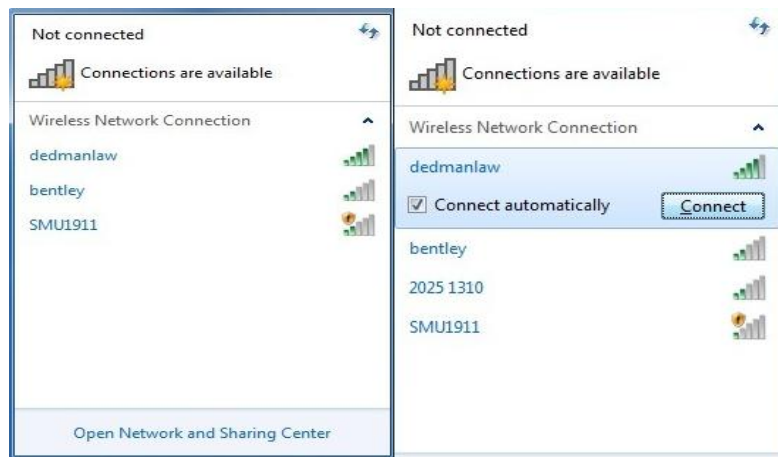


Figure 2

3. When the "Network Authentication" box appears, please enter your 8 digit SMU ID number and password (Figure 3)

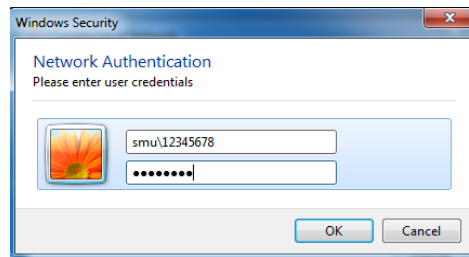


Figure 3

4. When the security alert dialog box appears, please click "Connect" to finalize the wireless setup (Figure 4)

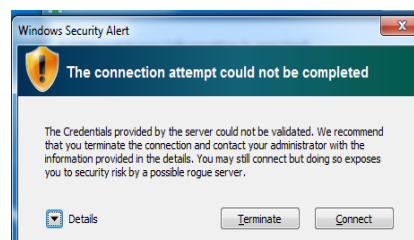


Figure 4