

CONFIGURING YOUR WIRELESS CONNECTION (FOR WINDOWS VISTA)

A. Configuring dedmanlaw when the connection is detected

1. Click **Start**
2. Click **Control Panel**
3. Click **Network and Sharing center**
4. Click **Manage Wireless Networks**
5. Click **Add**
6. Click **“Add a network that is in range of this computer”**
7. Select **dedmanlaw** from the list. *(If dedmanlaw is not available, go to section B for manual configuration instructions)*
8. Click **Connect**
9. Click **Enter/select additional log on information (Figure 1)**
10. Enter your SMU ID number in the User Name
11. Enter your password
12. Click **OK**
13. Click **Enter/select additional log on information**
14. Click **OK** to select the certificate
15. Check **Save this network** and **Start this connection automatically**
16. Click **Close**

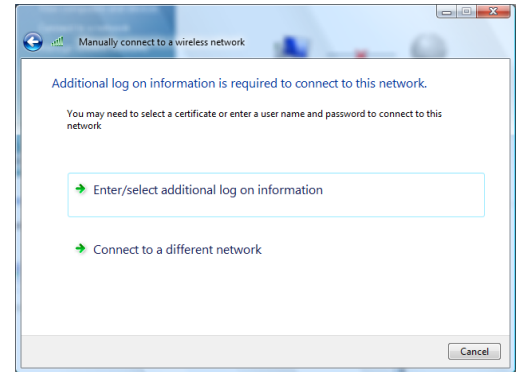


Figure 1

B. Configuring dedmanlaw manually when connection is not detected

1. Click **Start**
2. Click **Control Panel**
3. Click **Network and Sharing Center**
4. Click **Manage Wireless Networks**
5. Click **Add**
6. Click **Manually create a network profile (Figure 2)**
7. Enter **dedmanlaw** as the Network name
8. Select **WPA-Enterprise** as the Security type (Figure 3)
9. Select **TKIP** as the Encryption type
10. Check **Start this connection automatically**
11. Click **Next**
12. Click **Change Connection Settings**
13. Select the **Security** tab
14. Click the **Settings** button
15. Click **Configure**
16. Uncheck **“automatically use my Windows logon name and password”**
17. Click **OK**
18. Click **OK**
19. Click **Close**
20. Click the Popup window that appears on the task bar
21. Enter your SMU ID number and password in the appropriate fields. Leave the domain blank.
22. Click **OK**
23. Click on the second Popup window that appears on the task bar
24. Click **OK** to accept the wireless certificate

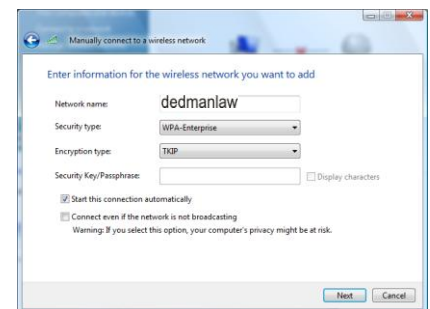


Figure 2

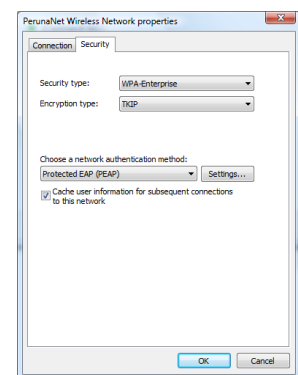


Figure 3

If you have a separate wireless configuration utility installed, come see a Lawtech staff member for assistance.