

CONNECTING YOUR MAC OSX LAPTOP TO THE LAW SCHOOL'S SECURE WIRELESS NETWORK

1. Locate the wireless icon in the menu bar and click (Figure A)



Figure A
(Wireless icon In Menu Bar)

2. Verify that your **AirPort** is turned on
3. Select “**dedmanlaw**” from the list of available networks (Figure B)
4. Check the box beside “**Remember this network**” and input your SMU student ID for the Username and your SMU password and click “Join” (Figure C)

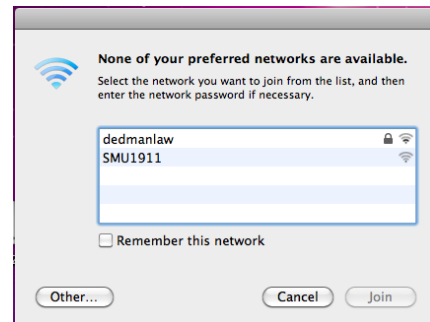


Figure B
List of available networks

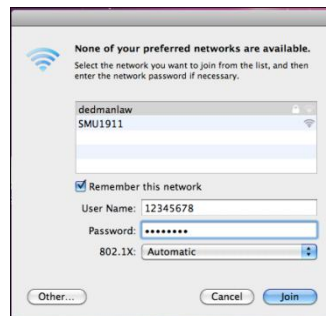


Figure C
Connect to “dedmanlaw”

Once you have connected you will notice your wireless icon in the menu bar has changed as seen in Figure D, and “**dedmanlaw**” will have a check next to it as seen in Figure E



Figure D
Wireless icon in Menu Bar shows connected

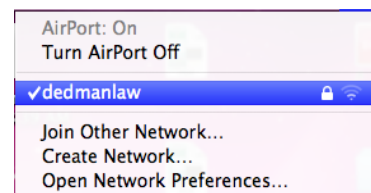


Figure E
Connected next to “dedmanlaw”

5. To verify settings click on “**Open Network Preferences**” from the Wireless icon (Figure F)

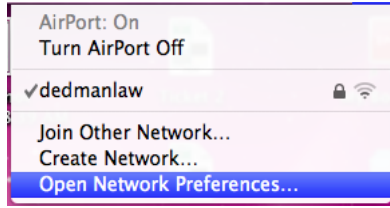


Figure F

To verify network settings select “**Open Network Preferences**”

6. Select “**AirPort**” from the left column. On the right, next to “**Status**” you will notice “**Connected**” with a valid IP Address. Select “**Advanced**” from the bottom right (Figure G)

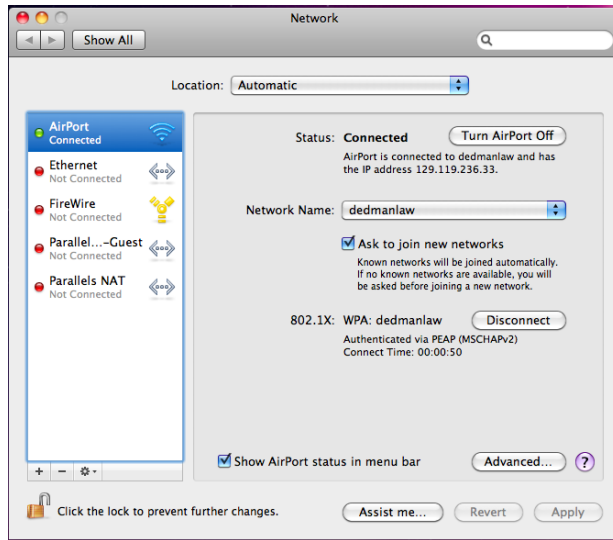


Figure G

Airport status

7. From the “**Advanced**” menu select the “**802.1x**” tab from the top. In the left column select “**dedmanlaw**”. In the right column verify your Username and Password are entered and confirm that “**Authentication**” only shows “**PEAP**” to be enabled and “**Wireless Network**” should show “**dedmanlaw**” (Figure H)

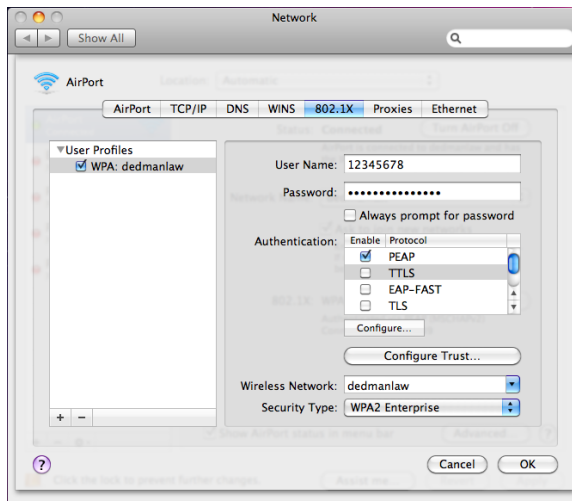


Figure H

Confirm 802.1x settings

8. Click OK