

## PRINTING FROM YOUR WINDOWS XP/VISTA LAPTOP COMPUTER TO THE LAW LIBRARY'S LAB PRINTERS

(Windows XP, Windows Vista)

To print via the wireless network from your personal laptop computer to the printers in the library's third floor computer lab, you must run a batch file to authenticate with the printer system. (Note: The batch file must be re-run if a wireless network disconnection occurs.) Windows XP, Windows Vista and Windows 7 require different setups.

To create your batch file, go to the Windows "Start" menu and click on "Run..." as shown below in Figures A and B.

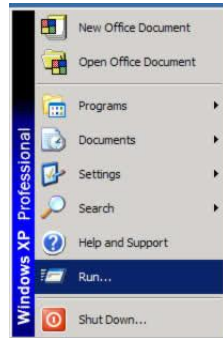


Figure A: Windows XP Classic Theme Run

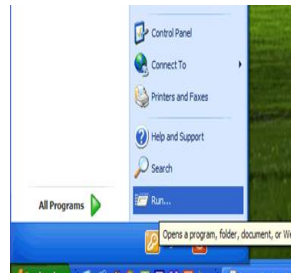


Figure B: Windows Vista Theme Run

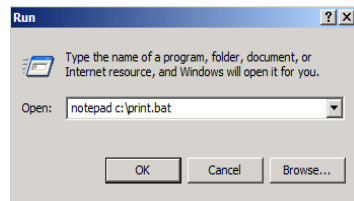


Figure C: "Run" Window

This should generate a box similar to Figure C. In that box, type *notepad c:\print.bat* as shown above and click "OK". This will run the notepad program which should open a blank window.

After moving the cursor to the point represented in Figure D, enter the text below (next page). Replace the text *11111111* with your eight-digit SMU ID number without the dash. You may choose to insert your password (represented here by "*optionalpassword*"), but you will have to change this file when you make a password change.

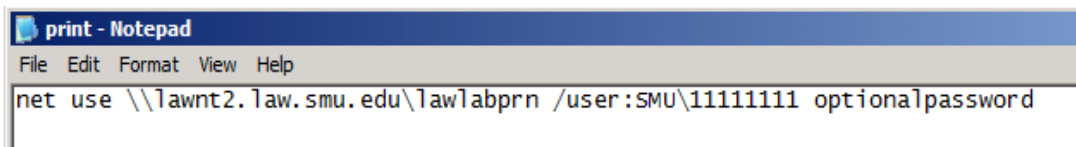
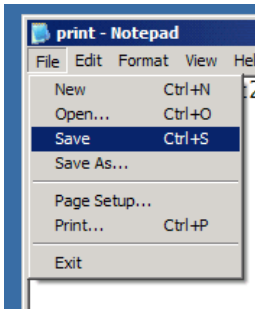


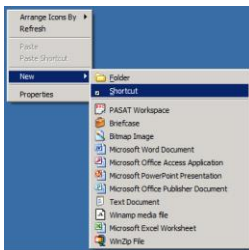
Figure D: Looking at the new username and password of the batch file

Go back to the File menu and select save to save your changes to the file as shown in Figure E. Exit notepad to complete the process.



**Figure E: Saving the changes to the batch file**

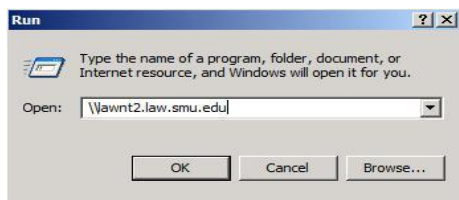
Create a shortcut on your desktop to the c:\print.bat file. You will run this file each time you want to print to the lab printers using the wireless network. The easiest way to do this is to right-click on the desktop and select New -> Shortcut from the menu as shown below. Go to the desktop and enter *print.bat* in the dialogue box that follows and follow through the wizard to complete the process.



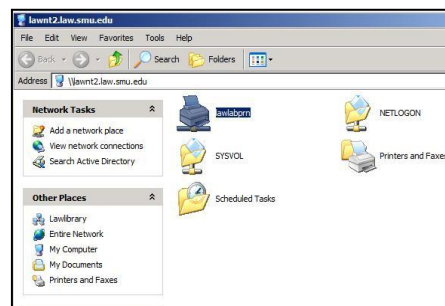
**Figure F: Create a shortcut on your Desktop**

Laptop computers that have not been configured to print to the Law Library’s lab printers require the simple configuration change below.

1. Connect to the wireless network.
2. Run your printer batch file.
3. Go to the “Start” menu and select “Run.” Type `\\lawnt2.law.smu.edu` as shown in Figure G.
4. A window similar to Figure H will appear. Double-click on the *lawlabprn* icon. If asked whether the printer driver should be installed, click “Yes.” The *lawlabprn print queue* will open and initialize.



**Figure G**



**Figure H**