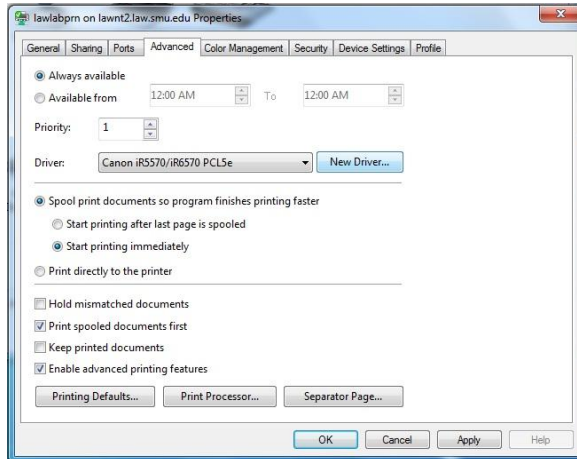


## UPDATING THE WINDOWS PRINT DRIVER

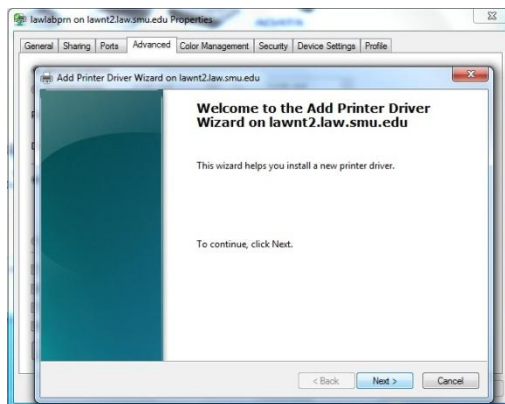
The lab printer is already installed and all you need to do is update the windows driver for the new Lab Printer (Canon IR5050).

1. Unzip the file from the link located at <http://library.law.smu.edu/Lawlibrary/Files/winprint2010.zip>. A folder will be created—probably off of the “downloads” folder.
2. From the “**Printer Properties**” select “**New Driver**” from the “**Advanced**” tab as seen in Figure L.



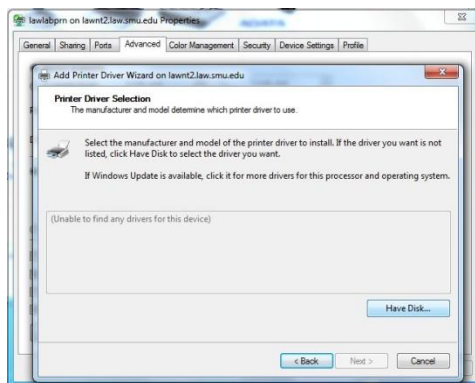
**Figure L**  
Select “New Driver” from the “Advanced” tab

3. The “Add Printer Driver Wizard” will launch as seen in Figure M.



**Figure M**  
Add Printer Driver Wizard

4. Click “Next.”
5. Select “Have Disk” as seen in Figure N.



**Figure N**  
Click “Have Disk”

6. Inside the “winprint2010” folder is a “iR5050” folder with drivers for 32bit and 64bit Windows Operating Systems. “Browse” to the “iR5050” folder and select the “.INF” file for your Operating System (32bit or 64bit) and click “Open.”
7. Select the “Canon iR5050” driver and click “Next.”
8. Click “Finish”